

THE
ROCKHOUNDER



REGULAR MEETING The Gem, Lapidary, and Mineral Society of Montgomery County MD., Inc. will meet on Monday January 8th in the dining room of the Rockville Senior Center, 1150 Carnation Drive, Rockville. Meetings are held the 2nd Monday of the month from September to June. The short business meeting will begin at 7:45pm but the room is available to us at 7:30pm so come early and see what you and others have on the Show Table and chat with old friends. The program will be presented by Courtland Lee and is titled "Patuxent River Agate and other Mid-Atlantic Gemstones". A geologist, he was instrumental in having the Patuxent River Agate declared Maryland's State Gem Stone by the legislature in 2004.

THE BOARD OF DIRECTORS Will meet on Monday January 15th, 2007 at 7:30 pm at the home of David and Nancy Ballard. Any member is welcome to attend but please let Nancy know if you plan to attend. .

RE-INSTATED MEMBERS

THOMPSEN, Eric and Melissa, 13367 Hungerford Place, Herndon VA 20170-4318, 703 435 3849, erict@hunterlab.com.

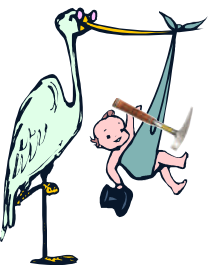


THE ROSTER has been updated by Bob Irby, and is included with this issue for our MEMBERS ONLY. Bob went through the tedious task of verifying E Mail addresses and other information listed. If you find any errors, please contact Wendell Mohr. The new list is not to be used for solicitation of business or any purpose not related to Society activities. PLEASE SAVE THIS ROSTER FOR FUTURE REFERENCE and add the information for new members, or changes for current members, as printed in later Rockhousers.

SUNSHINE George Reimherr had open heart surgery on Thursday November 9th. Our wishes are for a quick and complete recovery. His address is 7944 Jansen Drive Springfield VA 22152 if you case to send a card or note.



HAPPY NEWS Alison and Eric Durland are the proud parents of a new son, Edward Talbott Durland, born December 4th, 2006 at 6:50 pm. A big 21" tall and weighing in at 7# 10 1/2 Ozs., Edward is a new pebble pup in the rockhound Durland family, and George and Elsie's first grandchild. Congrats and best wishes to all.



FIELD TRIPS No field trips are scheduled for January or February. You are always welcome to get in touch with the Society Field Trip Chair Anita James, E Mail <johnjames04@comcast.net> or Phone 301 652 5527, to inquire about field trips.

NEW BOOK Just out: Can't Wait to Collect by Gladys Saturday



DEADLINE for the February 2007 Rockhousender is January 29th.

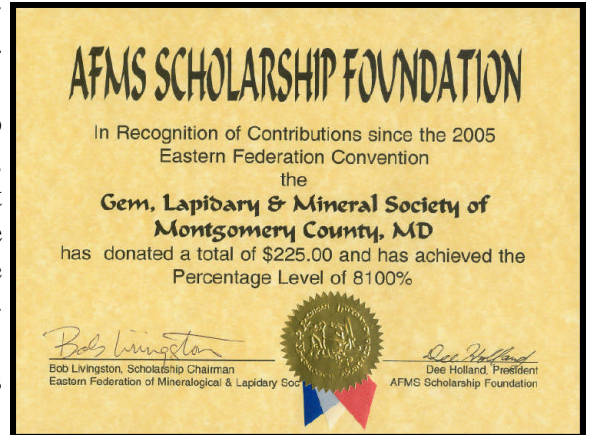
IN THIS ISSUE	
Meeting Announcements, Roster Changes, Get Well, New Baby, Field Trips, Rockhousender Deadline.....	1
Regular and Board Meeting Minutes, December Prizes.....	2
Birthdays, January Birthstone, The Ancient Eye (Trilobites).....	3
Snow Contingency, Wildacres Workshop.....	4
Show Workshop, Help (Volunteer), Educational Opportunities.....	5
Be Safe-Be Well (Safety) Best Places to Find Cash and Treasures (Cable TV), New Officers	6
Web Sites, Upcoming Shows.....	7
ENJOY!	



REGULAR MEETING MINUTES December 11, 2006. The meeting was called to order at 8:30 pm by President, Scott Braley, during the wonderful social evening featuring swap and sell and holiday refreshments. About 40 people were present. The minutes of the November Regular and Board meetings were unanimously approved. The Secretary position is still vacant. A call for volunteers elicited no response. Scott reported that 9 dealers have already paid for space at the March show.

A picture is worth a thousand words exemplified by new grandfather, George Durland, showing photos of his first grandson. See page 1.

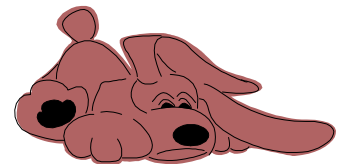
Wendell Mohr presented the award certificate for donations to the AFMS Scholarship Foundation in the name of GLMSMC, which was presented at the EFMLS Convention in November at West Palm Beach FL. This includes direct donations to the fund by individual members themselves or in memory of some one, and donations by the Society itself. The 8100% level reflects that we have contributed \$81 for each member to date. (\$1/year = 100%). A big hand for ourselves for supporting this educational effort, one of the purposes of the Society.



Wendell noted that Anita James (Currently in NY) has no field trips planned for Jan. or Feb. Wendell announced the rescheduled Pinesburg Quarry trip will be December 15th at 8:15 am. The deadline for the January Rockhouser is Dec.26th. A committee consisting of George Durland, Wendell Mohr, Juan Proaño, (And Rod Towers who was unable to connect up with the others) met at the Smithsonian National Museum of Natural History with Jeffrey Post. They selected three specimens* for purchase by Society from material brought back from the Denver G&M Show. Jeff Post is expected to speak to our group in the near future at which time you will learn more. The presentation is another educational undertaking of the Club. Coming shows were announced. Preparations should start now for exhibiting at our Show, March 10 & 11, 2007.

Don Turner Show Workshop Chairman asked for help in the shop. Paul Vance has volunteered to "Teach the teachers".

Chuck Mason introduced Ginger Posthumus, long time member who moved to Maggie Valley NC several years ago. He also introduced her daughter, Debbie Bard who lives in Warfordsburg PA who is Wildacres Registrar. A warm welcome was afforded both.



**Rockhound too
Pooped to Party**

There was no show table this month but Joel Rosen ably handled the door prizes. Additionally, each junior received a shark tooth and a polished rock.

Juan Proaño reported a correction to the November Board Minutes information: The APY (Annual percentage Yield) on the renewed CD is 5.3% not 5.93%

Notes by Wendell Mohr

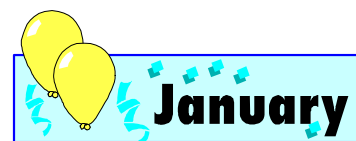
The meeting was adjourned at 8:55 pm.
*Calcite, Fozichong Lead & Zinc Mine, Guangxi Province, China, \$600, an unusual hexagonal prism with growths on the end. Eudidymite, Mt. Malosa, Zomba District, Malawi, \$600, a rare mineral, known previously from Mt. St. Hilaire and from which they had a specimen only about 1/5 the size. Silver in Acanthite, Lingqiu County, Shanxi Province, China, \$1750, festoons of clean silver crystals on the matrix.

BOARD MEETING MINUTES No Board meeting was held in December.

DECEMBER PRIZES: The Junior Prize, a Malachite from Katanga, Democratic Republic of Congo was initially won by Rory McElravy. (Who wants to take Rory, a consistent winner, to Las Vegas with them?) He graciously declined the specimen and donated it back for another drawing. Zachary Lupuloff won that drawing. The General Door Prize, won by Robert Winfield, was a Topaz and Amber Pendant.



HAPPY BIRTHDAY Members with Birthdays in January: Chris Barr, Scott Braun, Chris Crosswhite, Gladys Fuller, David Hald, Benjamin Harris, Matthew Hyland, Sara LaVilla, Harry Lupuloff, Robert Meny, Rob Robinson, Ron Suddendorf, Melissa Thompsen, Don Turner. Your birthstone is Garnet.



Garnets are silicate minerals with a cubic crystal system form. They crystallize in trapezohedral, rhombodecahedral or icositetrahedral structures, among others. Garnets can also occur as granules, masses or plate layers in calcareous and dolomitic metamorphic rocks, mica schists or gneiss. They are found frequently in sands and only rarely in igneous rocks. There are six basic kinds of garnet belonging to two series: almandine, pyrope and spessartite belong to the pyralspite series. The ugrandite series contains andradite, grossularite and uvarovite. Garnets have a specific gravity of 3.4 to 4.6 and rank between 6.5 and 7.5 on Moh's Hardness Scale. Garnet is often used as a grinding and polishing agent for softer gemstones.

Almandine, or common garnet, ranges in color from near black to brown, through red to violet. Andradite, grossularite and uvarovite can be green in color. Some garnet types can be yellowish or colorless. Almandine can be found in Sweden, the Urals of Russia, India, the Adirondacks of NY, South Dakota and Michigan, among other locations. Some kind of garnet can be found virtually anywhere in the world. Localities where each garnet type may be found are too numerous to list here.

Many Native American and African tribes have historically considered garnet a sacred stone. Believers in metaphysics deem garnet crystals to contain flashes of lightning, which allow them to deliver their powers with lightning speed. Garnet is believed to be a stone of commitment, be it to oneself, to a path, or to others. A close bond between you and another is said to be developed by carrying a garnet in your pocket, then placing it on the forehead of your intended. Garnets are believed by some to summon knowledge of past lives. Modern metaphysicians use garnets to siphon negative energy away from the chakras and transform it into positive energy for redeposit. Metaphysicians also use garnets to heal disorders of the spinal column, heart, lungs, blood and RNA/DNA structures. Almandine is believed to lead one along the path toward higher intellect. It is supposed to help particularly in clarifying the study of astronomy and mathematics. I'll venture it is bound to help with geology, as well.

References:

Schumann, Walter, Handbook of Rocks, Minerals & Gemstones, Harper Collins Publishers and Houghton Mifflin Company, New York, NY, 1993.
 Melody, Love Is In The Earth - A Kaleidoscope of Crystals Update, Earth-Love Publishing House, Wheat Ridge, CO, 1995.
 Sullivan, Kevin, The Crystal Handbook, Penguin Putnam Inc. Publishers, New York, NY, 1987.

By Thomas Bourne January 2006 Shin Skinner News.

THE ANCIENT EYE

Trilobites are among the oldest of the metazoans [multi-cellular animals with differential tissues and organs.] They were incredibly complex, especially for being the earliest with a brain, nervous system, digestive tract, muscular system, and compound eye. The puzzle of their complexity was emphasized by the lack of evolutionary predecessors. Trilobites were strictly marine animals that first occurred at the base of the Cambrian. It was thought that they were among the first fossils since no undisputed form as were known in the Precambrian. There a wide variety of fossils of simple plants and animals among the late Precambrian [late Precambrian] period, it corroborated the trilobite tracks that had been discovered and it is probable that the trilobite's predecessors were often not fossilized because of their lack of hard parts. Hard shells were primarily a Cambrian development. The evidence is that non-shelled trilobites lived in the Precambrian and developed hard shells of elegant and beautifully simple structure in the Cambrian. They are the most abundant and dominant fossils from the Cambrian, after which growing competition caused them to develop increasingly specialized and bizarre forms with complex spines, antlers and other armor probably meant for defense.

The Trilobite's inevitable decline was prolonged during the Carboniferous period, their antlers and spines disappearing, the specialization preventing them from adapting. Declining in numbers and in function, plain, small and defensive, the entire class of animals in the largest phylum of animals on earth, the anthropoids, became extinct by the end of the Permian. They had wandered the earth for 300 million years, and had developed 1,500 genera and over 10,000 species. They disappeared by the end of the Permian, along with 96 percent of all other species. Edited from Larry Solomon in Fossil News, via the Petrograph, via The Rockpile 10/06, via the Rock Collector 1/07.





SNOW CONTINGENCY Reminder: If schools in Montgomery County, MD are to be cancelled, or let out early, because of weather on the day of a scheduled Society meeting, we will have no meeting. Call the Society President or a Board Member (Numbers on the back of the ROCKHOUNDER) if in doubt. With the unusual weather patterns this year who knows what can happen!

WILDACRES WORKSHOP READY...SET...REGISTER! The “Opening Bell” for accepting registrations for the two EFMLS Wildacres sessions is January 1. Judging from comments received from past attendees, the Eastern Federation Wildacres experience is one that you should not miss! If you don’t believe me, just ask one of them.

The first session for 2007 will be held from April 20 - 26 with Bob Jones, Sr., Editor of Rock & Gem Magazine as our dynamic speaker. Session two will be held from September 10 - 16 and Dr. Steve Chamberlain will join us at that time. You can read more about these two engaging speakers on the EFMLS website <www.amfed.org/efmls> shortly. Just click on the Wildacres tab.

Let me tell you a little bit about Wildacres and the Eastern Federation Wildacres experience. Wildacres is a true retreat, undisturbed by traffic or noises of the city. The 1,600 acres are adjacent to the Blue Ridge Parkway and thousands of acres of the Pisgah National Forest. The buildings are modern yet rustic and provide a very comfortable setting for the program we offer.

Participants stay in two modern lodges. Each room has a private bathroom and can accommodate two people. Part of the beauty of the Wildacres facility is that it is quiet - there are no telephones in the rooms nor is there television or radio.

A series of meeting rooms and craft labs are spread around the mountain-top campus. Wildacres has quite an inventory of equipment which we may use for our classes - cabbing and faceting machines, and jewelry making tools, just to mention a few of the amenities. Classrooms are comfortable spaces in which to work.

The campus also sports a modern dining hall where meals are served each day. Like all the other buildings on campus, the dining hall blends into the campus rather than intruding. Meals are served family style...and no one goes away hungry. There is also a canteen that is open each evening in case you need an ice cream bar, stamps, post cards or a T-shirt or sweat shirt.

Wildacres is wonderful and it can be yours! A list of classes that will be offered is below.

I’ll have Wildacres registration forms at the January meeting or e-mail me at <wmohr@erols.com> and I’ll send you one. Debbie Bard, the Wildacres registrar will begin accepting registrations on January 1, so don’t delay. Be sure to indicate your 4 choices for classes so Debbie knows your interests and can assign you to classes based on your preferences. We’ll make every effort to assign you to them, but “newbies” who apply early do get preference in any class. There will be no class sign-up at Wildacres.

Spring - April 20 - 26
4-day classes
Faceting
Exhibiting & Judging
Wax Modeling & Casting
2-day classes
Cabbing - basic
Cabbing - intermediate
Crystallography
Fused Glass -basic
Fused Glass - intermediate
Ivory Identification
Micromounting

Silversmithing - basic
Chain Making - basic
Chain Making - intermediate
Fused Glass - basic
Fused Glass - intermediate
Geology
Intarsia
Small Mineral Photography
Gemstone/Jewelry Photography
Soapstone Carving
Silversmithing - intermediate
Wirewrap - basic
Wirewrap - intermediate

Fall September 10 - 16

4-day classes
Faceting
Gem ID
2-day classes
Cabbing - basic
Cabbing - intermediate
Adapted from EFMLS
News Jan 2007 by Steve
Weinberger



SHOW WORKSHOP Don Turner, the Shop Leader for our Show, needs to have an adequate cast of members to help in the shop. Here's an opportunity not to miss. Learn how to make cabochons under the able guidance of Paul Vance, expert Lapidary. He has offered to educate you at his own home workshop. Give Paul a call at 301 935 5560 to arrange a suitable time. The requirement is that you promise to help demonstrate cabbing to guests at our March 10th and 11th Show. Learn and Demonstrate: "Kill 2 birds with one stone" but don't tell the Audubon Society.



HELP!! While on the subject of helping, the Society still urgently needs a Secretary. This is not a highly technical job. You need to keep notes on the regular and board meetings. Don't worry about spelling and punctuation or grammar, the editor will handle that when the notes are published in the newsletter.

Although Scott Braley is temporarily handling the show chairmanship, it is asking him to spread himself very thin with the duties of the Presidency as well. We need a permanent show chairman. Duties include overall Show management, arranging table and chair rental, and guard service. Dealer contracts, and venue rental are already done for 2007. Why not even take just a part of the job duties? You choose.

Volunteers are needed to serve on the Science Fair Committee. The committee selects winners from among the junior and senior high projects involving earth sciences and to whom we make awards. The 51st Montgomery Area Science Fair is being held by Montgomery County Fair Grounds in Gaithersburg. Our judging will take place on March 17th. George Durland has already volunteered. Can you give him a hand for Scott Braley, know which of these needs you will fill and/or get more information.



EDUCATIONAL OPPORTUNITIES:

◆ **Glen Echo Park** Information 301 634 2222 or Web <www.glenechopark.org>. Registration by mail, with check, cash, money order, or credit card or walk in.

Beginning Metalsmithing, Age 15 & up. 4 sessions, Saturday, Feb 3-24, 2007, 10 AM-2 PM. Fee \$265. There is a \$10 Registration fee added to class fee. Instructor Deborah Dubois.

◆ **Montgomery Co. Recreation Dept./Montgomery Parks.**

Stone Sculpture Age 18 up. 10 sessions, starting either Wed. Feb. 22. or Thur. Feb. 22 at Concord Center. Instructor Annamyra Ruppert. \$145 fee, furnish own tools, supplies and stone.

Jewelry There are too many classes (11) to cover here. Get the Montgomery Guide of Recreation and Park Programs Winter 2006-7 to see the selection.

Gemology I Mini-Session 6 sessions starting Wed. January 10 at Concord School 10 am- noon. Cost \$58. Instructor our own Lisa Carp.

Gemology II Mini-Session 6 sessions starting Tues. January 9 at Concord School 10 am- noon. Cost \$58. Instructor also Lisa Carp.

Crystal Magic For ages 5 and up, 1 session, Tues. Jan 16, 7 pm - 8:15 pm, Black Hill Visitor Center, Friends of Black Hill \$4.

Geology Rocks! Rock Creek rocks, For ages 8-14 years, 1 Class, Wed. Feb. 14, 3:45-4:45pm., \$5, Meadowside Nature Center. Leader Naturalist Melanie Marshall.

Westmoreland State Park Van Tour VA State Park trip for birds and Fossils. Ages 18 & up, 1 Class, Thur. Jan. 25th, 8:30 am-5 pm. Leader Fawn Foerster. Bring money for lunch at Colonial Beach. Leaves from Meadowside Nature Center.

◆ **Audubon Naturalist Center**

The Ice Age, For Kindergarteners, 8 classes, beginning Feb. 1 through Mar. 22, 3:30-5:30 pm. Members \$92, nonmembers \$125.



BE SAFE - BE WELL What is in Your pocket? by Don Monroe, AFMS Safety Chair



Many times back on the farm my mother asked me this question. I was expected to give her an inventory which always began with my pocket knife which I have always carried except on airplanes and in the courthouse. I also carried rocks or arrowheads (now isn't that a surprise?), Minnie balls or grapeshot which littered our farm left from the Civil War battle there and anything else that I had found fascinating. I was rarely inclined to tell her if I was also carrying any small snakes or other varmints since her sense of humor definitely had limits. Much later I finally learned that she was simply trying to figure out what was wearing out my pants pockets so quickly.

My reason for discussing things carried in pockets is to talk about things that should be carried and some of the things that shouldn't. Many industrial plants have strict rules against carrying disposable lighters. When working in areas where flammable gases or liquids are present, it is possible to start a fire simply by leaning against a work bench and thereby pressing the lighter. This is not at all uncommon and can result in burns or even explosions. Other bad things to be avoided in pants pockets include sharp objects such as files, scribes, syringes, pencils or ball point pens and glass which may break.

Have you ever considered your billfold a hazard? Well, it can be if you always carry it in the same back pocket and it is rather thick. Pressure on your backside can actually result in nerve damage. This has often happened to salesmen and others who spend a lot of time in their car.

There are some handy things that you might want to consider having with you such as the following:

- Small sharp pocket knife (I obviously believe in them).
- Magnifying glass if it is plastic or protected in some sort of case.
- Small tape measure.
- Small compass (don't get lost).
- Money clip (Which can hold a little money and your driver's license or credit card and take the load off that billfold).



If I had written this article when I was a boy I would not have included the women and girls since they relied on apron pockets and trousers simply were not worn by ladies. Times do

change and all of my comments apply to any and all who wear pants.



"He always ruins the pockets of his pants!"

THE BEST PLACES TO FIND CASH AND TREASURES The Cable TV

Travel Channel premiered a series on Dec. 5th, 2006 at 10 pm Eastern Time which should be of interest. The programs continue into January.

<u>Date</u>	<u>Episode</u>
12/5	Sunstones and Gold
12/12	Diamonds and Sunken Treasure
12/19	Aquamarines and Meteorites
12/26/06	Sapphires and Civil War
1 /2/07	Truffles and Fluorescent Minerals
1/9	Opal and Geodes
1/16	Amethyst and Meg Teeth
1/23	Antique Bottles and Fish Fossils

Most of these have already been presented but they usually re-run programs, so watch for them in the future.

A great big thanks to **Rod Towers** who filled the Vice President role for as long as the By-Laws allow.

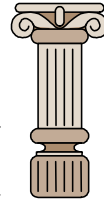


NEW OFFICERS duties commence January 1st and we welcome **Harry Lupuloff** to the office of Vice President (And Program Chairman).

And best wishes to other new officers



And lastly many thanks to **Bob Winfield** who also "Timed out" as Secretary.

WEB SITES**This Month's Column**

By Wendell C. Mohr

Paper Models of Polyhedra, <<http://www.korthalsaltes.com/>> Atlas of Delft, Netherlands is great for kids as well as adults. Beforms known at the time of Plato and Archimedes, it has many to construct from templates. Forms include the cube, tetrahedron, octahedron, dodecahedron, icosahedrons and many more, some not known as crystals in nature, but exciting, decorative, and fun to make. I wonder why halite cleaves into cubes, but salt shakers have round holes!

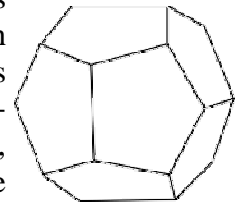
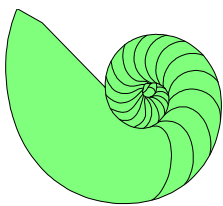
by G. Korthals
ginning with
crystal forms

Photo Atlas of Minerals, (Suggested by Patricia Repik, new to the Society this year) is by Theo Kloproggi at Queensland University of Technology. Found at <<http://www.mineralatlas.com>>, it is a remarkable piece of work affording the viewer a vast database with physical and chemical data, photos, electron microscopy and thin section images, mineral vibrational spectra, Infrared and Raman spectra. 3650 minerals are included, 2200 of which are depicted in 61,000 color pictures. There are 100 Scanning Electron Microscope images of 50 minerals. The status of each mineral is given as agreed by The Commission on New Minerals, Nomenclature and Classification (CNMNC) of the International Mineralogical Association (IMA). Did you hear about the man who swallowed carnotite? He got atomic ache. Ernie fell very ill after years of collecting galena and evidently absorbing metal ions. Doctors are working to reduce lead levels in Earnest.



Cretaceous Fossils, by Keith Minor and Bill Jolley, <<http://www.cretaceousfossils.com/>>, is an award winning site. They've put together a reference resource on fossils from the (Late dinosaur age) period, 145 to 65 million years ago. They have a large database of photos and information on invertebrates and vertebrates and plants from private and academic collections. Discover the myriad of facts by poking around the topics listed at the left of the home page. I got some excellent sand dollars. When asked where I got them I replied "I bought them at The Dollar Store". At that store, they told me they were Cretaceous, 100 million years old. I asked if that qualified me for a senior discount.

UPCOMING SHOWS:

March 3-4 44th Annual Earth Science Gem & Mineral Show, Delaware Mineralogical Society, in expanded facilities at Delaware Technical and Community College, I-95 at Exit 4B, Churchmans Road (Route 58), Newark (Stanton), DE 19713. Sat. 10-6, Sun. 11-5. The show features an expanded roster of dealers. Adm. \$5, \$4 for seniors, \$3 for ages 12 and 16, and free for under 12 accompanied by an adult. Info., map, and Coupons at <www.delminsociety.net> or E mail <gene@fossilnut.com>. Further info. contact: President Karissa Hendershot (302) 762-7760 or Show Chair Wayne Urion (302) 998-0686 or E-Mail <wurion@aol.com>.

March 10-11 **Our** largest annual event is the GEM-MINERAL-FOSSIL SHOW at the Montgomery County Fairgrounds. A show exhibit application is included with this issue. We take pride in the many exhibits which YOU and friends put into the show, a feature not seen in commercial shows. Plan NOW to exhibit. Heather Felsen, Exhibits Chair, wants to have your commitment EARLY. She needs to be able to allocate space and prepare recognition for exhibits in the program. Help her out by not procrastinating. She would like to have the assurance of 40 or more cases. Don't be shy. YOU can do it! Everyone is a beginner at some time. If you feel you have not got enough for an exhibit, mention this at the meeting and perhaps we can pair up some people for a shared exhibit.



March 24-25 29th Annual Gem, Mineral, & Jewelry Show, Franklin Co. Rock & Mineral Club, Quality Inn & Suites, I-81 at exit 14, Wayne Ave., Chambersburg PA.

March 24 Gem, Mineral, and Fossil Show, Southern MD Rock and Mineral Club, Clearwater Nature Center, Cosca Regional Park, 11000 Thrift Rd., Clinton MD. Saturday only, 10-4. Ages 7 and up \$2, 6 and under free.

March 30-April 1 Atlantic Micromounters Conference, Micromineralogists of the National Capital Area, MD Hospital Association Conference Center, Elkridge MD. Registration and information: S. Weinberger <cscrystals2@verizon.net>

BOARD OF DIRECTORS

President-Scott Braley, 3813 Hillcrest Drive, Annandale VA 22003-2311	301 305 1193
Vice President-Harry Lupuloff, 14005 Gray Birch Way, Rockville MD 20850-5455	301 309 1801
Secretary-Unfilled	
Treasurer-Juan Proaño, 8624 Bunnell Drive, Potomac MD 20854-3545	301 299 2034
Junior Advisor-Rod Towers, 19609 Gunners Branch. Rd., Germantown MD 20876-2738	301 972 1264
Field Trip Chairperson-Anita Lizas James, 4874 Chevy Chase Dr., Chevy Chase MD 20815-6421	301 652 5527
Membership Chairperson-Nancy Ballard, 16812 Baederwood Lane, Derwood MD 20855-2011	301 926 7374
Show Chairman Pro-tem-Scott Braley, 3813 Hillcrest Drive, Annandale VA 22003-2311	301 305 1193
Property Manager-Joel Rosen, 833 Rampart Way, Union Bridge MD 21791-9325	410 775 7937
Immediate Past President-George Durland, 8600 Bunnell Drive, Potomac MD 20854-3545	301 299 8213
EFMLS Liaison-Wendell Mohr, 9509 Emory Grove Road, Gaithersburg MD 20877-3501	301 926 7190
Bulletin Editor- Wendell Mohr, 9509 Emory Grove Road, Gaithersburg MD 20877-3501	301 926 7190

Charter Member: Dan Spielman; Life Members: David Ballard, Nancy Ballard, Jack Busch, Larry Harrison, Anna Marcus, Wendell Mohr, Charlotte Morrison, Dan Spielman, and Paul Vance

Society Address: GLMS of Montgomery County MD., Inc.
P. O. Box 444, Gaithersburg MD 20884-0444

All Society correspondence is to be sent to this address except that which is intended for the Rockhounder and its editor. Such items are to be sent to the editor's home address.



Permission to copy material printed herein is granted provided credit is given.



FIRST CLASS MAIL
DATE MATERIAL
TIMES SENSITIVE

THE ROCKHOUNDER
Gem Lapidary and Mineral Society
Of Montgomery County Md. Inc
Wendell Mohr Editor
9509 Emory Grove Road
Gaithersburg MD 20877 - 3501

